

# London Oxford Airport's Circuit Pattern



# Oxford Circuit

1,500 feet above sea level (QNH)

Turn at Bunkers Hill / A4095

Airport's Air Traffic Zone (ATZ)

Turn at water works and before rail line to avoid Brize Norton CTR

This leg should be between Yarnton Manor / St. Bartholomew Church & main village

more realistic radius

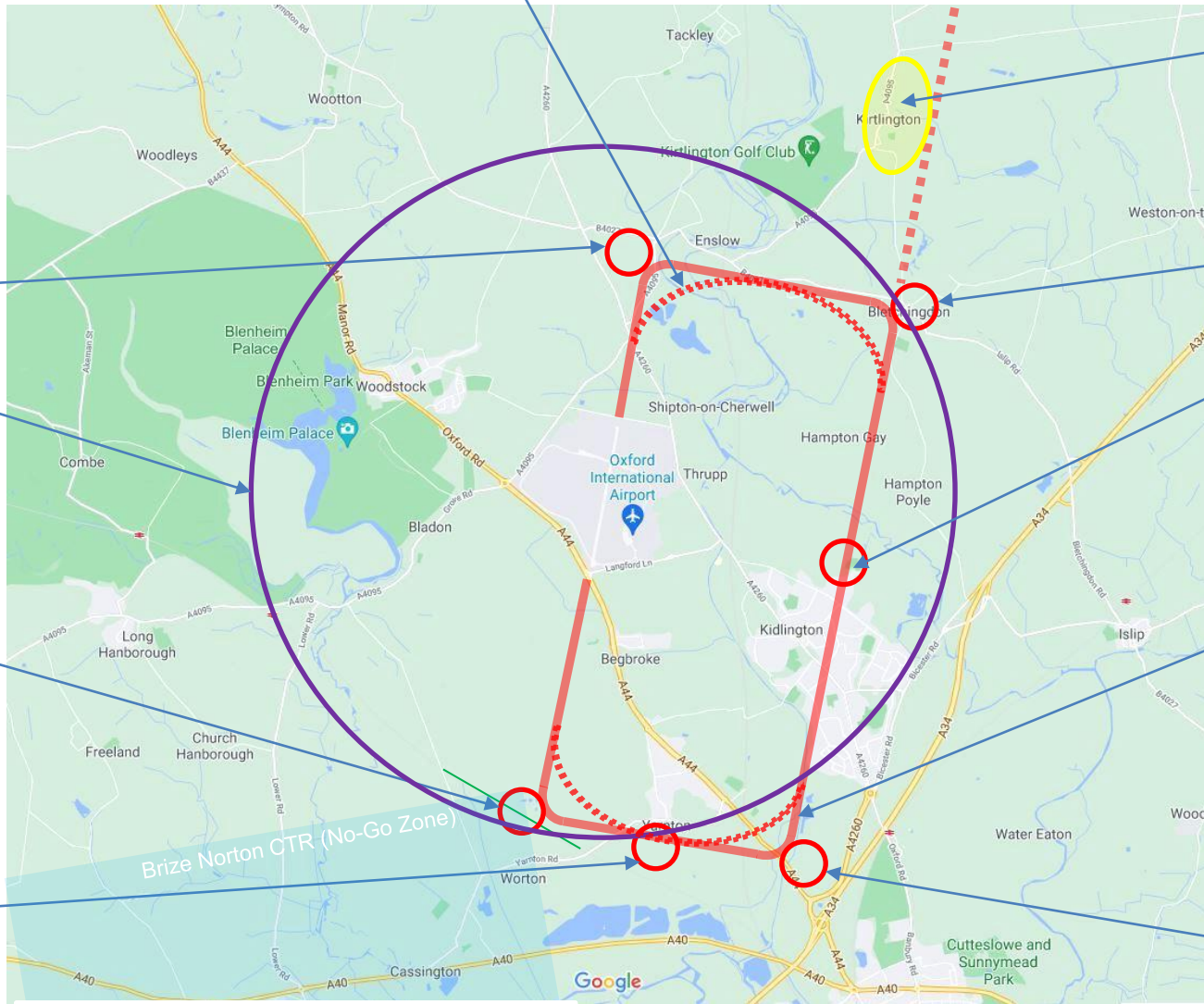
Extended downwind leg passes Kirtlington

Turn just before Bletchington

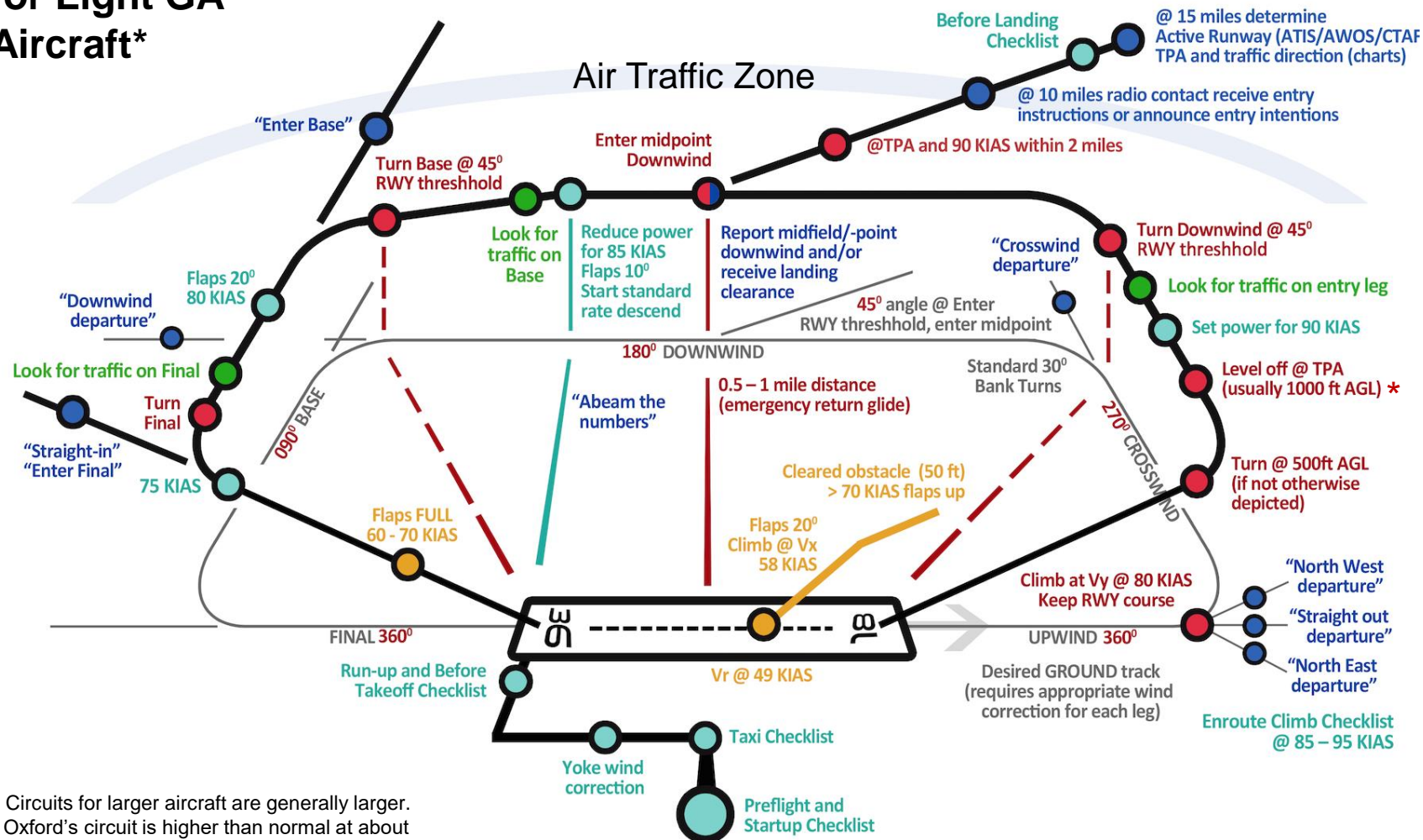
St. Mary Church

**Note – Standard Circuits are supposed to be contained within the ATZ, but OXF's pops-out to help avoid Yarnton centre**

Turn at canal and A44 junction and above solar farm

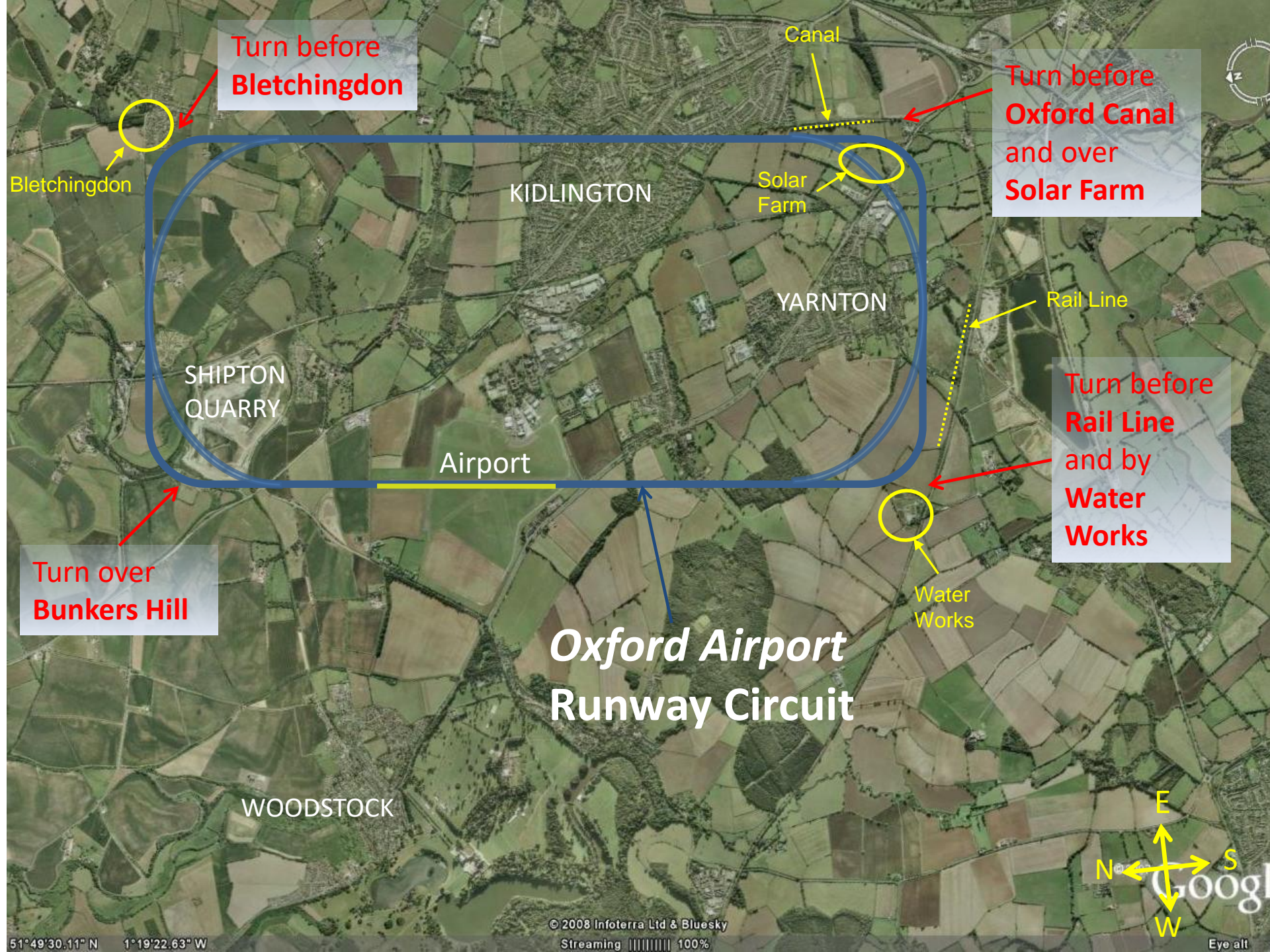


# A Typical Standard Circuit for Light GA Aircraft\*



\* Circuits for larger aircraft are generally larger. Oxford's circuit is higher than normal at about 1,250ft above ground level, 1,500 above sea level (most aerodrome circuits are 800-1,000 feet)





Turn before  
**Bletchington**

Turn before  
**Oxford Canal**  
and over  
**Solar Farm**

Turn before  
**Rail Line**  
and by  
**Water Works**

Turn over  
**Bunkers Hill**

# Oxford Airport Runway Circuit





# Oxford Airport Runway Circuit to the North



Extended Downwind Leg  
towards Kirtlington

Enslow

Duchy Field  
Estate

Bletchington

Bunkers Hill

Shipton Quarry

Greenhill Leisure Park

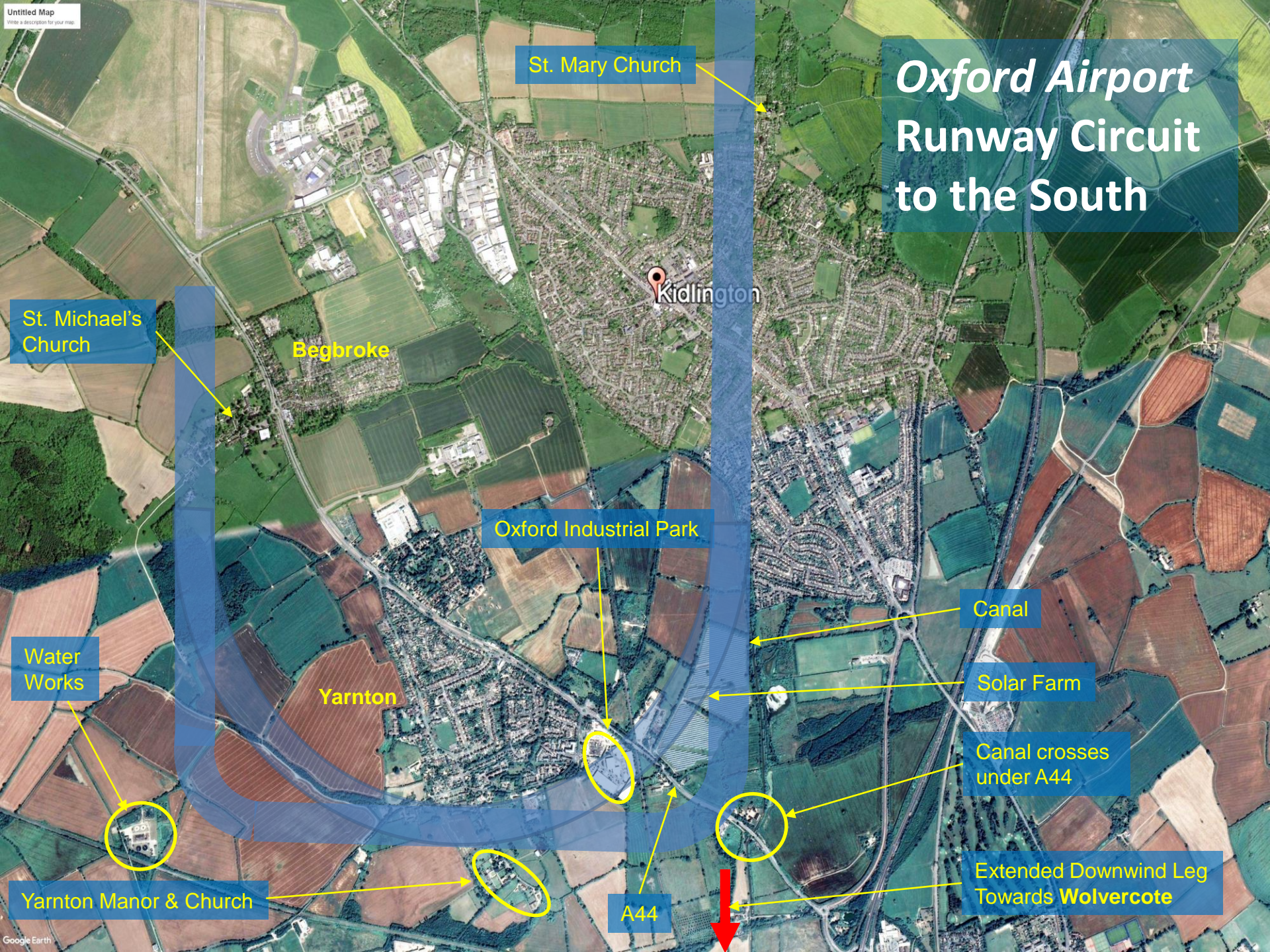
Willowbrook Farm

Shipton-on-Cherwell

Hampton Gay

Hampton Poyle





# *Oxford Airport* Runway Circuit to the South

St. Mary Church

St. Michael's Church

Begbroke

Kidlington

Oxford Industrial Park

Water Works

Yarnton

Canal

Solar Farm

Canal crosses under A44

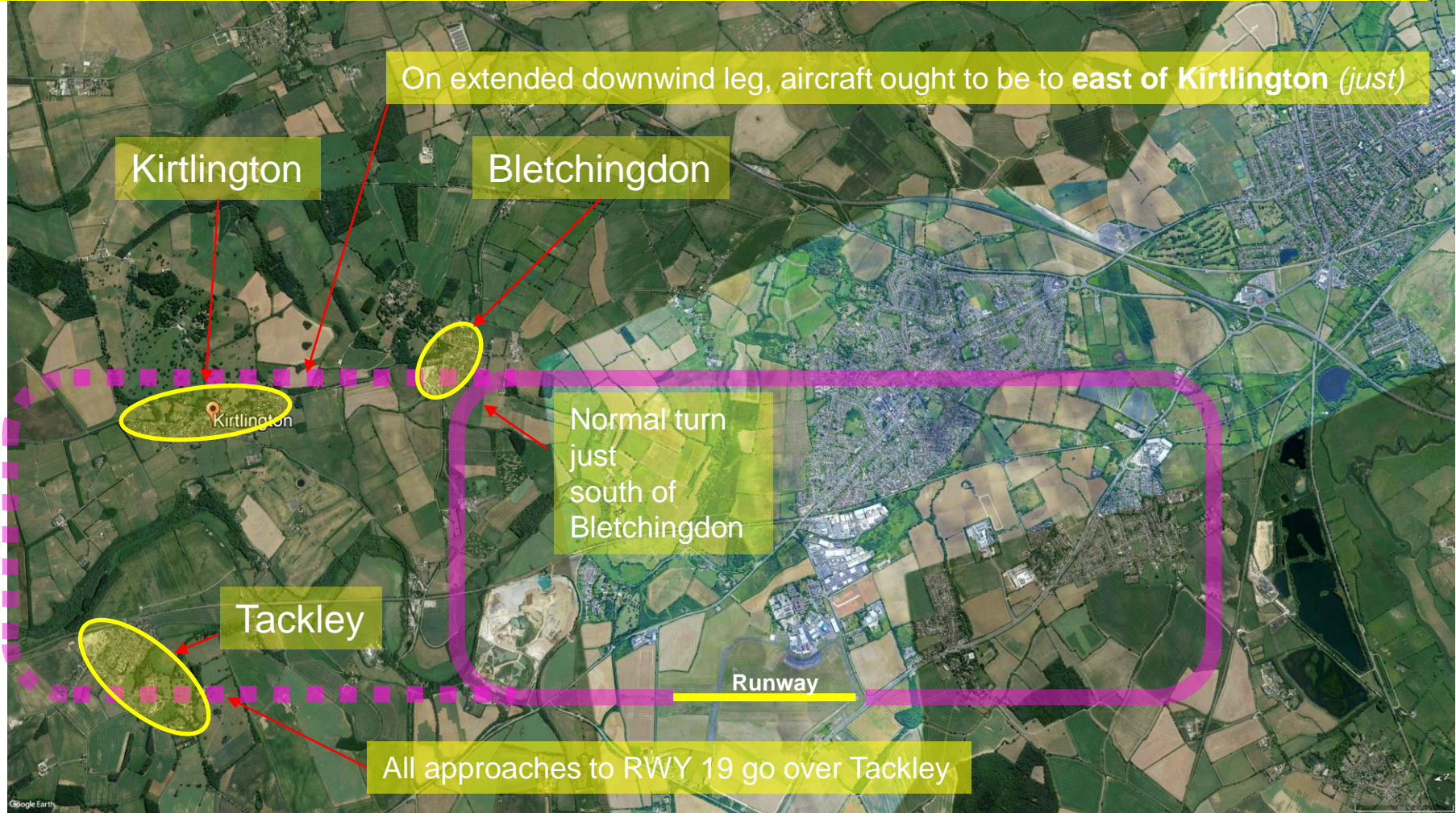
Extended Downwind Leg Towards **Wolvercote**

Yarnton Manor & Church

A44



Bletchington, Kirtlington and Tackley will be effected by **circuit extension on downwind leg:**







Benmead Road

St. Mary Church

Runway

Green Road

Direction usually 70% to north /  
30% to south – due to wind

Yarnton Road

Moreton Road

Canal

OXF / EGTK Circuit Path Above Kidlington



**Circuit impact very different  
today compared to 75 years ago**



*Kidlington 2020*



*Kidlington 1945*

**Several hundred additional  
residencies under circuit today**