

# London Oxford Airport ACC Meeting – 30<sup>th</sup> January 2024 Data/Slide Set



## OXF ACC Meeting Data Set:

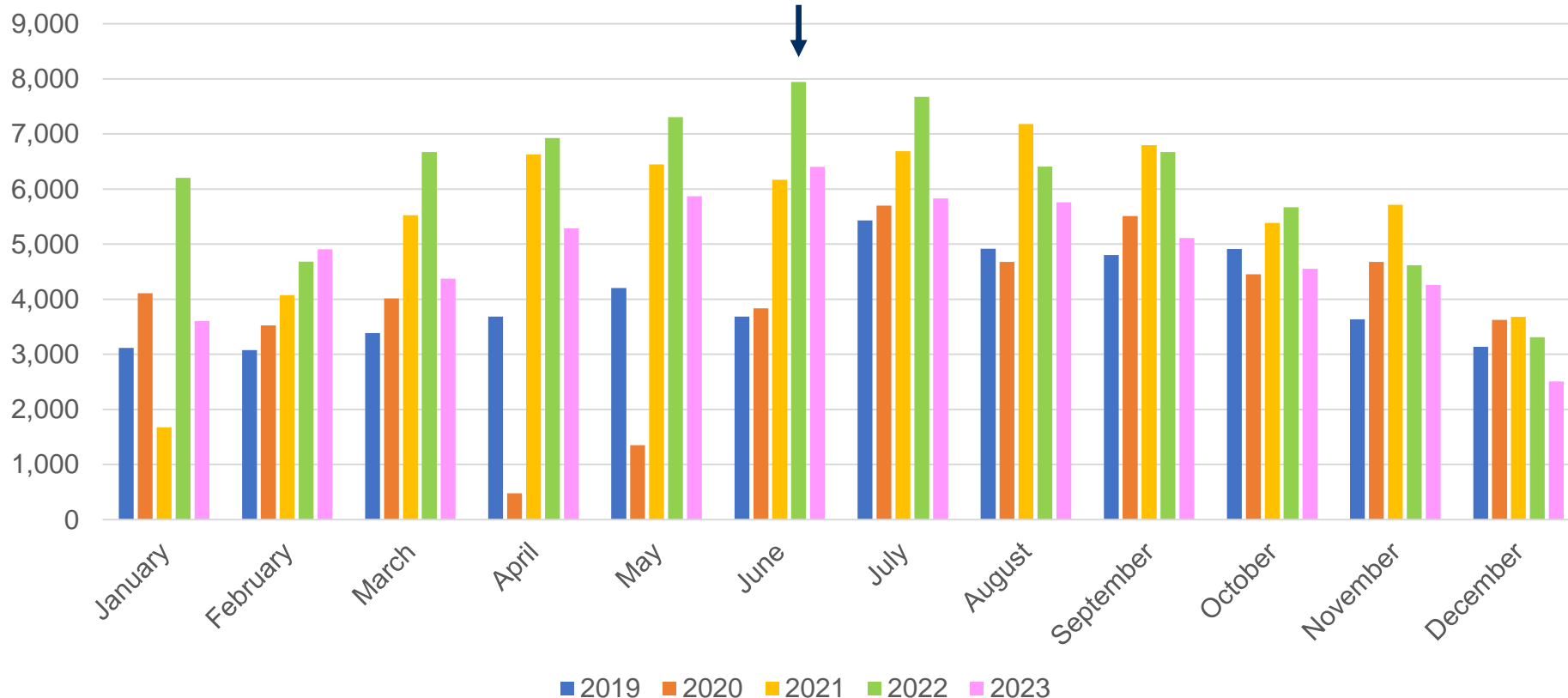
- Key/notable numbers/statistics
- 5 years-to-date monthly movements chart
- Last decade's monthly movements table (to-date)
- Training activity levels – this year vs. last year
- Total annual movements since 1998
- Oxford airport's (OXF) traffic mix by aircraft category
- OXF's 'Section 106 Agreement' limits and compliance
- 2024 anticipated development projects - update

## OXF Notable Numbers:

- 2023 saw a **-21%** reduction in flights compared with 2022
- Training flights are down overall by **-29%** year-to-date whilst the largest pilot school (of four schools) is down **-40%** year to date
- On the 'business aviation' (i.e. jets & turboprops) front, we are **39%** busier than same period, *pre-pandemic (2019)* – i.e. @ **17.6** movements / day average, but 6.5% down compared with last year
- Busiest day since pre-pandemic period was May 26<sup>th</sup> 2021 @ **415** movements (vs. busiest last year - March 27<sup>th</sup> @ **386** movements)
- Last year saw approx. **12,000+** passengers use Oxford to/from **330** different international destinations

# OXF Monthly Movements – 2019 - 2023

*Busiest Month for 16 years (June 22)*



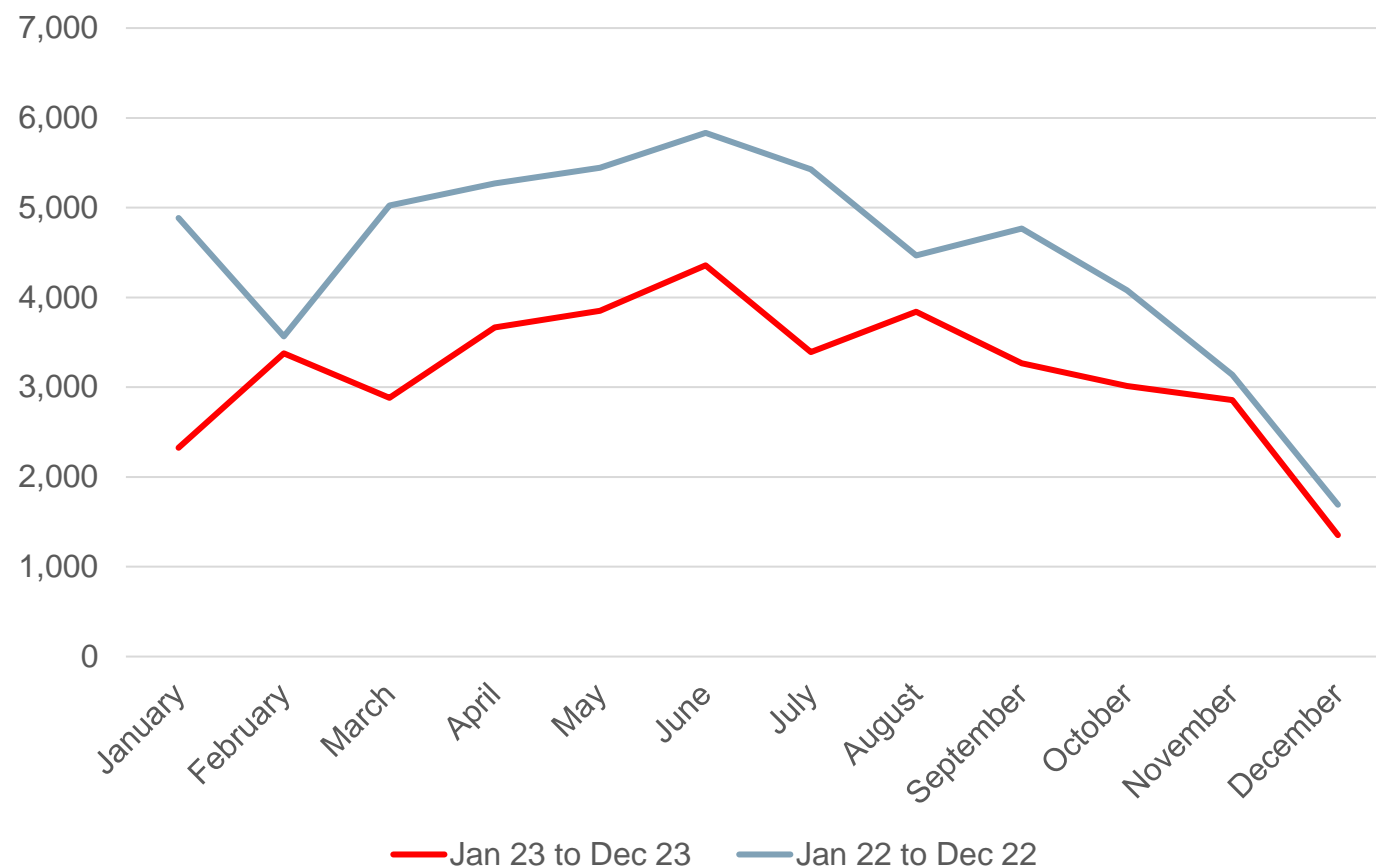
# OXF Monthly Movements - Last Decade



Total movements are down 21% in 2023 vs. 2022

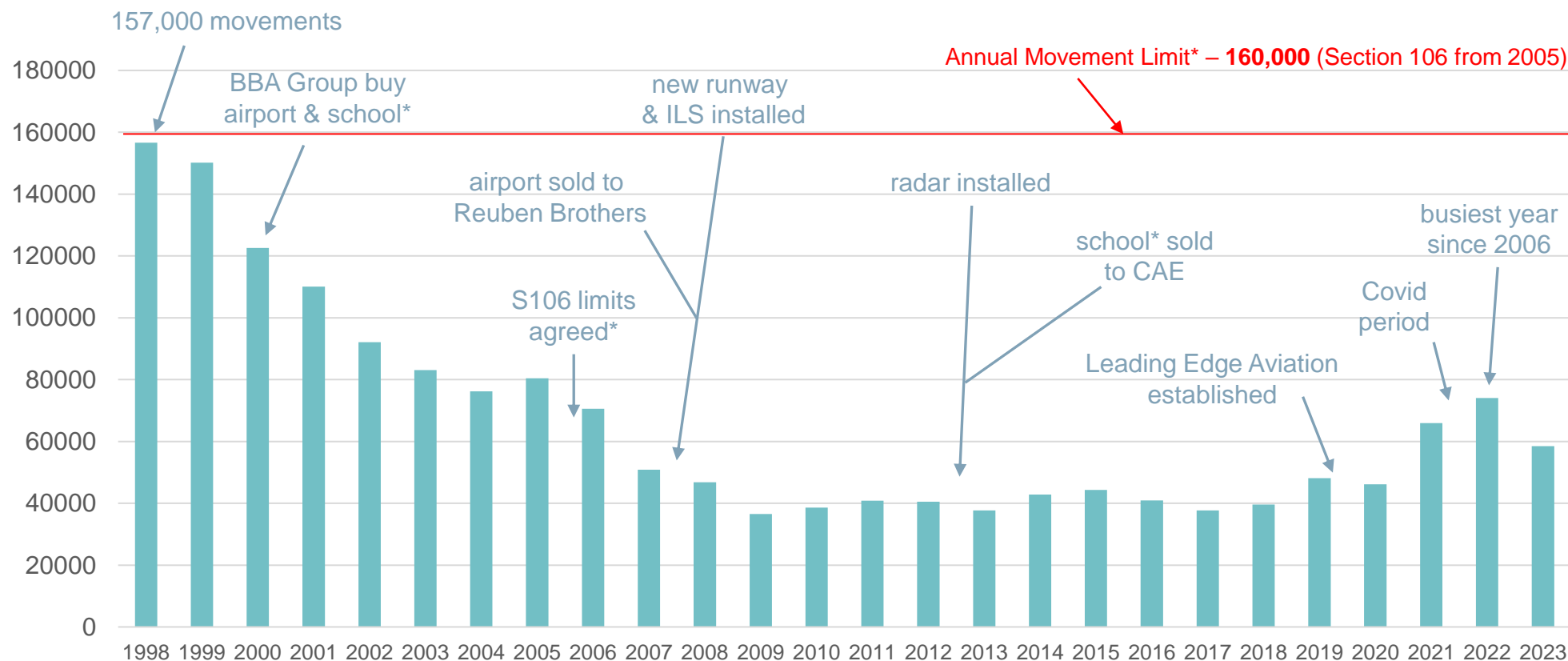
	2012	2013	2014	2015	2016	2017	2018	2019	2020	2021	2022	2023
January	2,481	1,843	2,161	2,592	2,495	2,323	2,013	3,115	4,107	1,677	6,205	3,606
February	2,692	2,703	2,717	3,490	3,532	2,679	2,512	3,077	3,524	4,074	4,682	4,906
March	3,478	2,703	3,595	3,401	3,637	3,328	2,739	3,384	4,014	5,524	6,670	4,374
April	2,814	3,298	3,999	4,443	4,067	3,585	3,126	3,685	481	6,628	6,928	5,287
May	4,647	2,791	3,941	4,049	4,687	3,411	3,631	4,204	1,353	6,450	7,305	5,867
June	3,502	3,795	4,892	4,844	3,277	3,797	4,468	3,687	3,836	6,095	7,946	6,402
July	4,454	4,441	4,681	4,365	3,999	3,614	4,374	5,430	5,702	6,702	7,673	5,829
August	4,162	4,096	3,918	4,245	3,540	3,643	4,249	4,915	4,678	7,192	6,408	5,761
September	3,887	3,178	4,085	4,287	3,461	3,268	3,926	4,800	5,509	6,789	6,671	5,112
October	3,049	2,770	3,101	3,468	2,956	3,043	3,367	4,914	4,454	5,388	5,669	4,553
November	3,136	3,624	2,928	2,606	3,288	3,158	2,860	3,636	4,679	5,716	4,620	4,258
December	2,183	2,414	2,799	2,522	1,971	1,862	2,363	3,139	3,624	3,680	3,309	2,508
<b>TOTALS</b>	<b>40,485</b>	<b>37,656</b>	<b>42,817</b>	<b>44,312</b>	<b>40,910</b>	<b>37,711</b>	<b>39,628</b>	<b>47,986</b>	<b>45,961</b>	<b>65,915</b>	<b>74,086</b>	<b><u>58,463</u></b>

## Training Flights @ OXF



Overall, a **29%** drop in training activity levels (movements) in the last 12 months from 54K to 38K

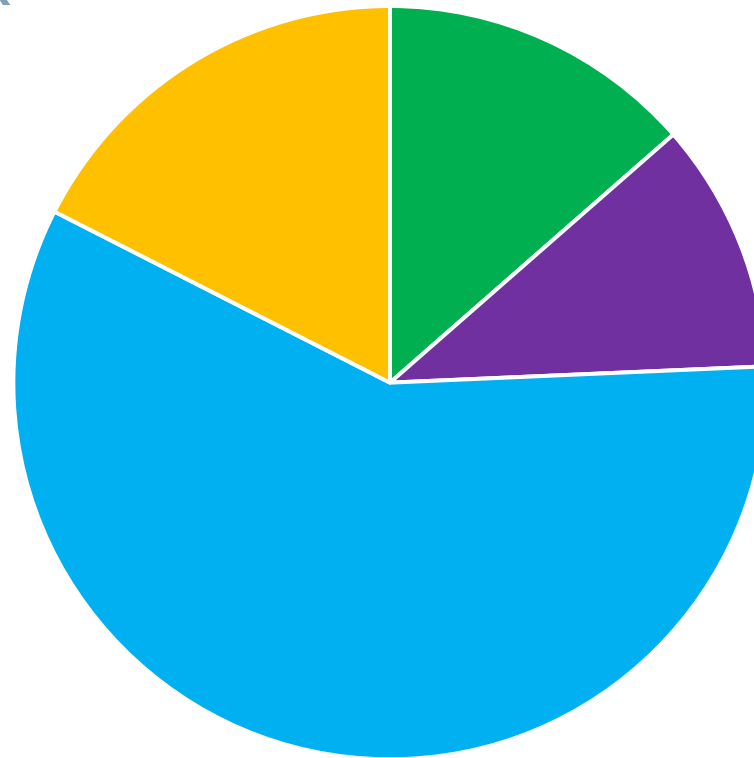
# Annual Movements – Past 25 Years



\*Main OXF Pilot School was CSE Aviation / Oxford Aviation Training / Oxford Aviation Academy / CAE – now **Leading Edge Aviation** is the largest school

# London Oxford Airport Traffic Type/Mix\*

\* **July 2023** Snapshot  
(historically the peak month)



■ Helicopters (Rotary)  
■ Training (Light GA Piston)

■ Jet (Business)  
■ Other (Light GA and Turboprops)

Note: **Business Aviation** movements have now *increased 39%* since 2019 (pre-pandemic)

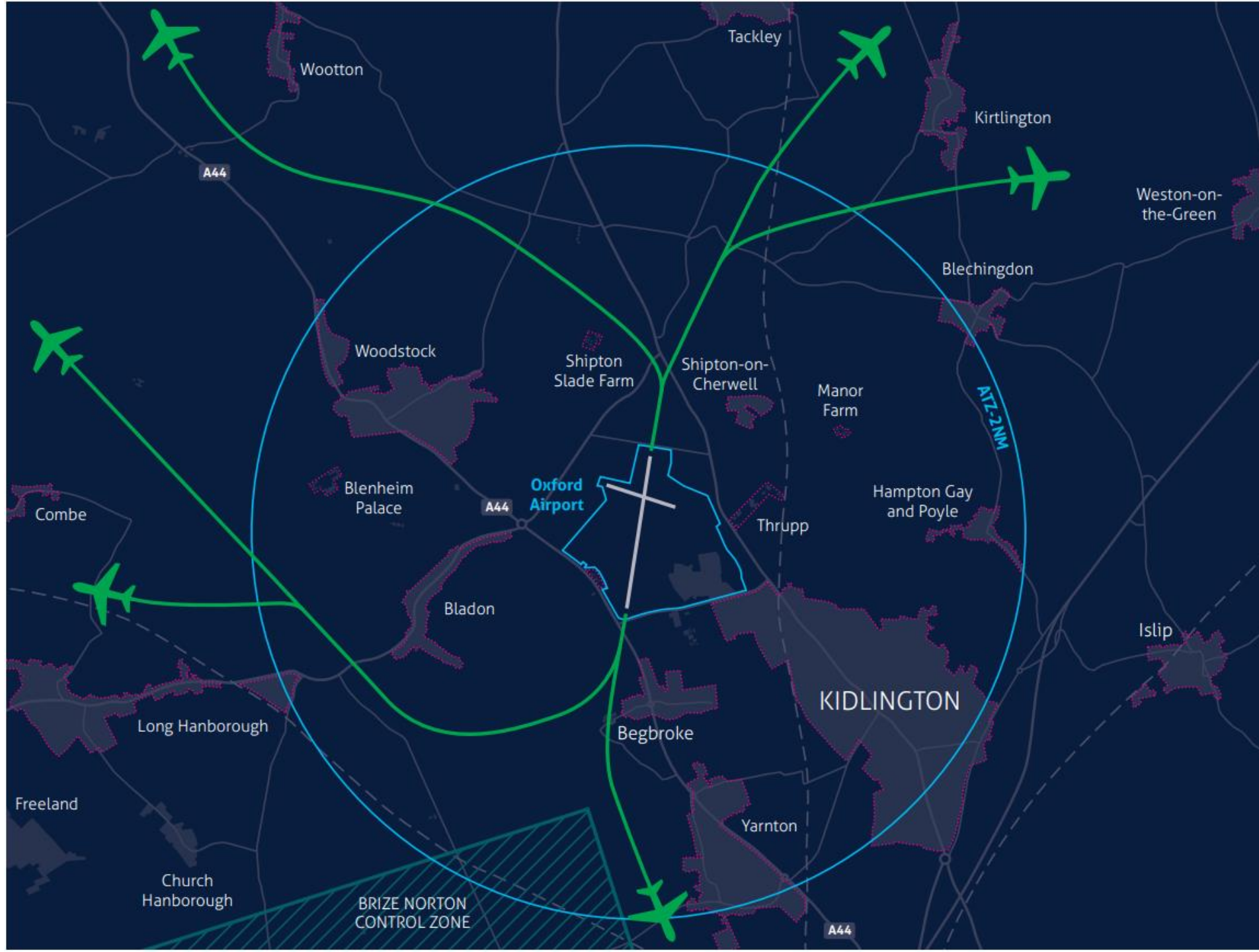


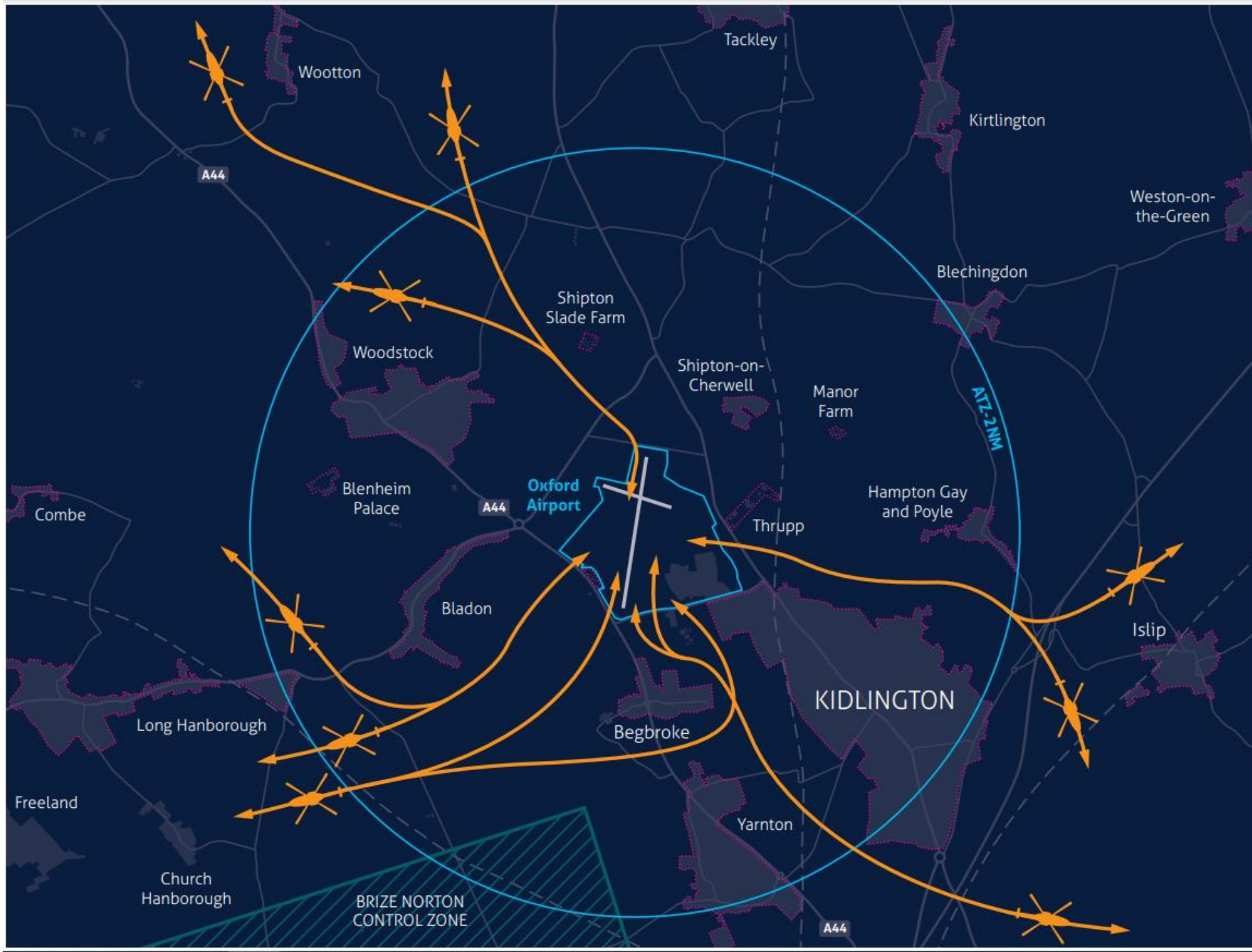
# OXF Section 106 Limits & Breaches

	S106 Ref	Section 106 Annual Limit	OCT - DEC 2022	OCT – DEC 2023	
Night-time Emergency Services movements	1.2.1	No Limit	None	None	
Night-time Air Ambulance movements	1.2.2	500/annum	None	None	
Night-time Any Emergency Movements	1.2.3	No Limit	None	None	
Night-time Diversion Movements	1.2.4	No Limit	None	None	
Total Movements	3	160,000/annum	13,593	11,319	
Chapter 2 Jets (ICAO Annex 16)	4.1	500/annum	None	None	
50+ Tonne Jets	4.2	2000/annum	None	12	
<b>Other monitoring - not reportable under Section 106 Agreement</b>					
Night Embargo Breaks - midnight to 06:00		None (YTD)			

# Basic Noise Abatement Recommended Paths

## Fixed-Wing & Helicopter







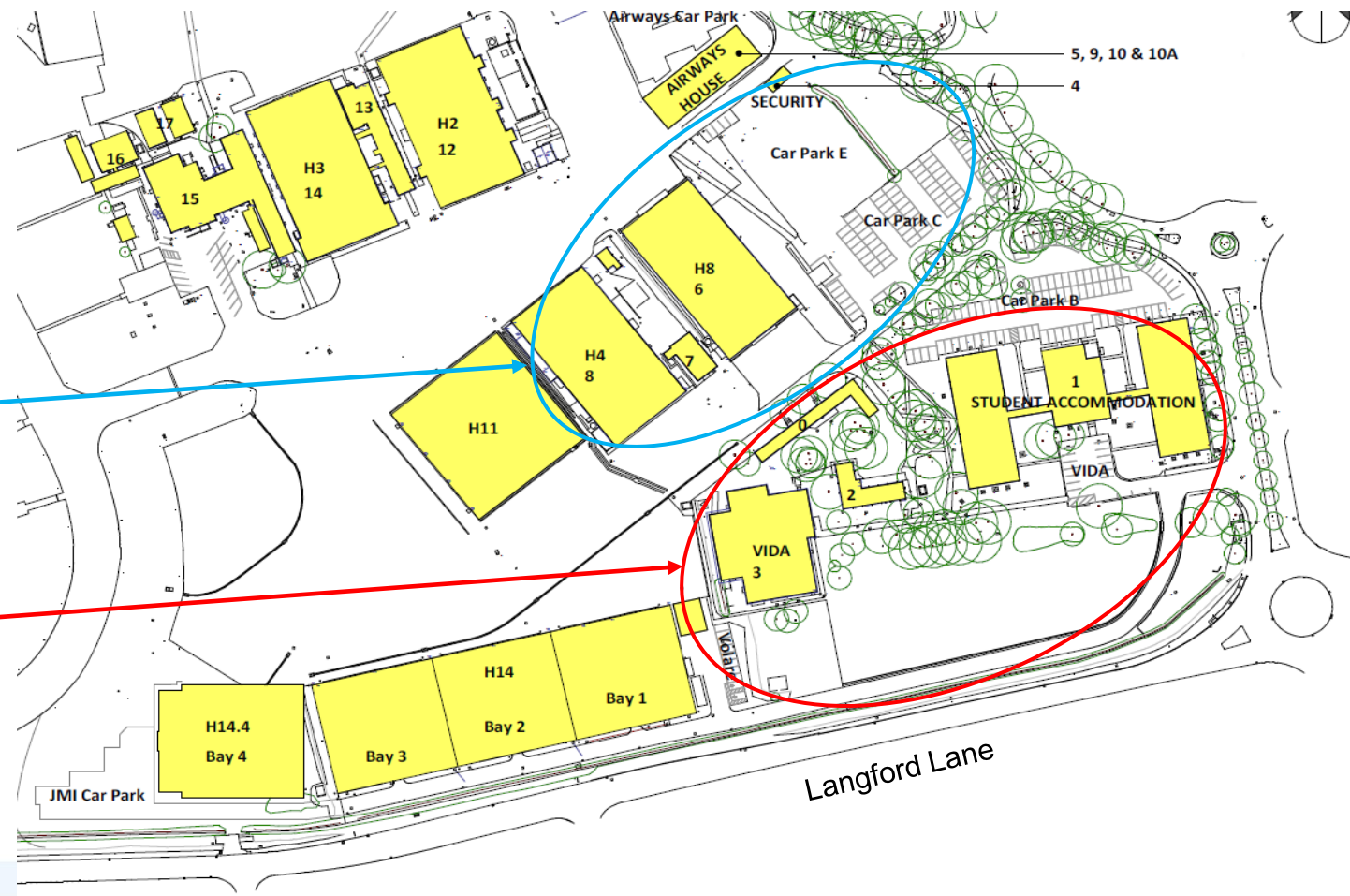
R & D Science Park  
@ Airport Entrance Zone  
(project commences April 2024)

# Airport Business Park Proposal

(Existing Layout)

Phase 2

Phase 1









INDICATIVE CGI VISUALISATION OF CENTRAL COURTYARD AND CAFÉ





INDICATIVE OVERHEAD CGI VISUALISATION

London-Oxford Airport... a year in the life!