

London Oxford Airport ACC Meeting – 4th June 2024 Data/Slide Set



OXF ACC Meeting Data Set:

- Key/notable numbers/statistics
- 5 years-to-date monthly movements chart
- Last decade's monthly movements table (to-date)
- Total annual movements over 25 years
- Oxford airport's (OXF) traffic mix by aircraft category
- OXF's 'Section 106 Agreement' limits and compliance
- 2024 anticipated development projects - update

OXF Notable Numbers:

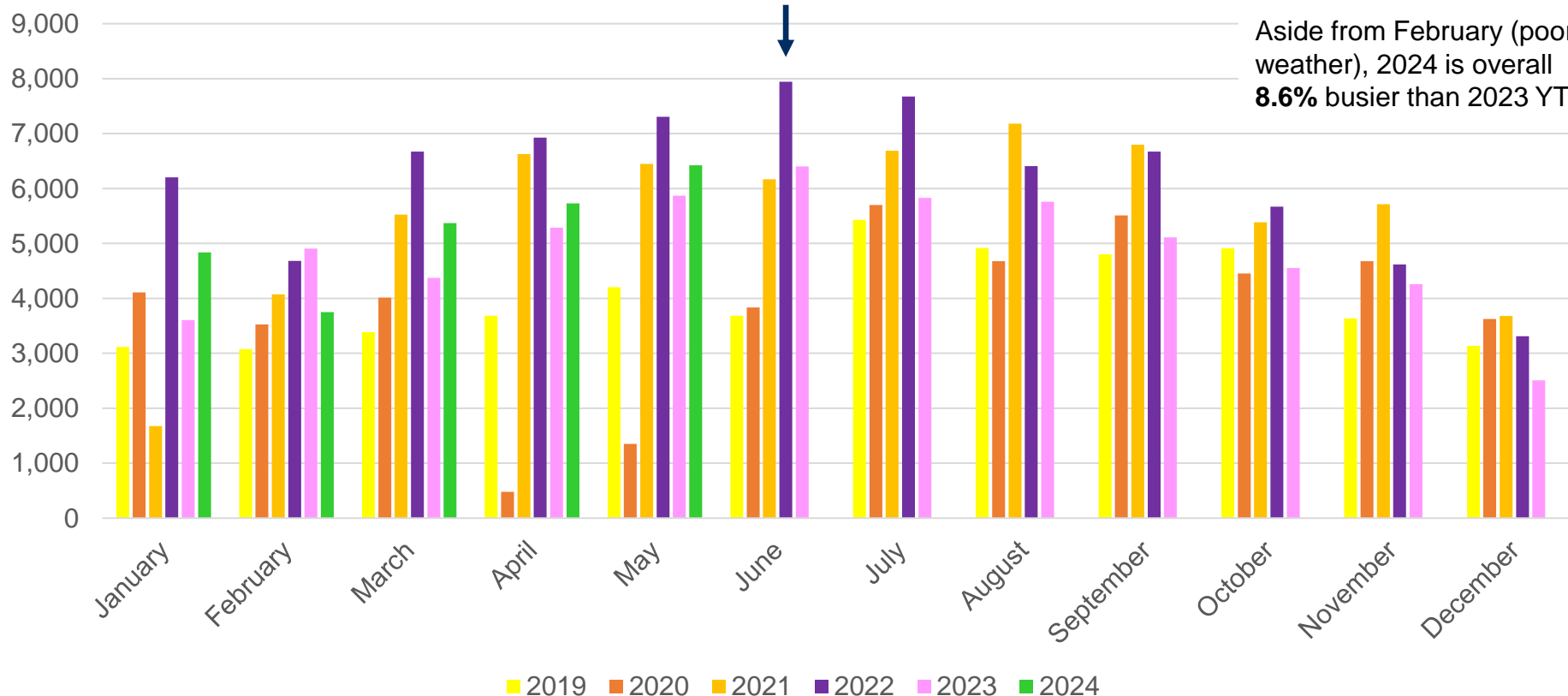
- 2024 YTD (5 full months) are up **8.6%** on all movements vs. same period in 2023
- of which *Training* movements are up **14.3%** (67% of overall activity)
- On the 'business aviation' (i.e. private or business jets & turboprops) front, we are - **5%** down compared with same period last year (*similar to European trend*)
- Busiest day YTD – was May 24th @ **404** movements vs. busiest day since pre-pandemic period which was May 26th 2021 @ **415**
- Last year saw approx. **12,000+** passengers use Oxford to/from **330** different international destinations

OXF Monthly Movements – 2019 - 2023

Busiest Month for 16 years (June 22)



Aside from February (poor weather), 2024 is overall **8.6%** busier than 2023 YTD

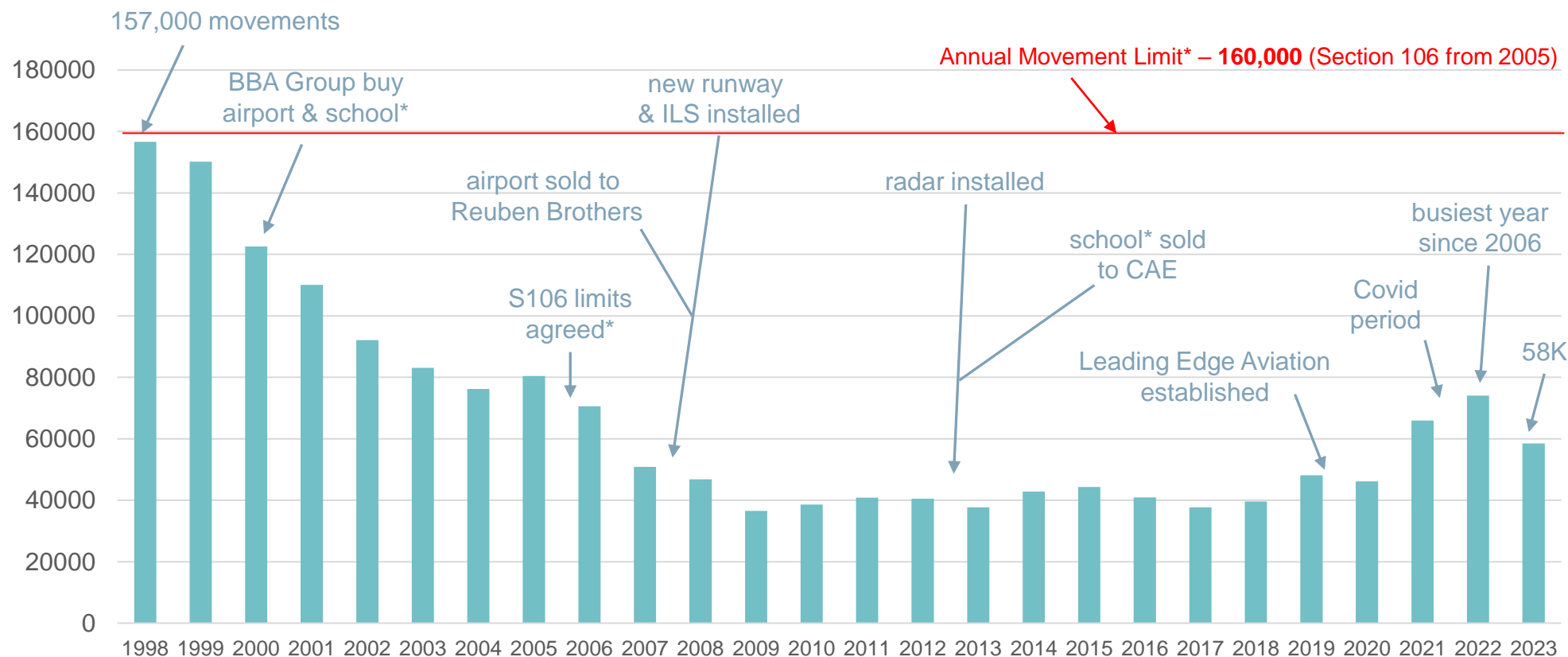


OXF Monthly Movements - Last Decade



	2012	2013	2014	2015	2016	2017	2018	2019	2020	2021	2022	2023	2024
January	2,481	1,843	2,161	2,592	2,495	2,323	2,013	3,115	4,107	1,677	6,205	3,606	4,837
February	2,692	2,703	2,717	3,490	3,532	2,679	2,512	3,077	3,524	4,074	4,682	4,906	3,748
March	3,478	2,703	3,595	3,401	3,637	3,328	2,739	3,384	4,014	5,524	6,670	4,374	5,369
April	2,814	3,298	3,999	4,443	4,067	3,585	3,126	3,685	481	6,628	6,928	5,287	5,732
May	4,647	2,791	3,941	4,049	4,687	3,411	3,631	4,204	1,353	6,450	7,305	5,867	6,424
June	3,502	3,795	4,892	4,844	3,277	3,797	4,468	3,687	3,836	6,095	7,946	6,402	
July	4,454	4,441	4,681	4,365	3,999	3,614	4,374	5,430	5,702	6,702	7,673	5,829	
August	4,162	4,096	3,918	4,245	3,540	3,643	4,249	4,915	4,678	7,192	6,408	5,761	
September	3,887	3,178	4,085	4,287	3,461	3,268	3,926	4,800	5,509	6,789	6,671	5,112	
October	3,049	2,770	3,101	3,468	2,956	3,043	3,367	4,914	4,454	5,388	5,669	4,553	
November	3,136	3,624	2,928	2,606	3,288	3,158	2,860	3,636	4,679	5,716	4,620	4,258	
December	2,183	2,414	2,799	2,522	1,971	1,862	2,363	3,139	3,624	3,680	3,309	2,508	
TOTALS	40,485	37,656	42,817	44,312	40,910	37,711	39,628	47,986	45,961	65,915	74,086	58,463	-

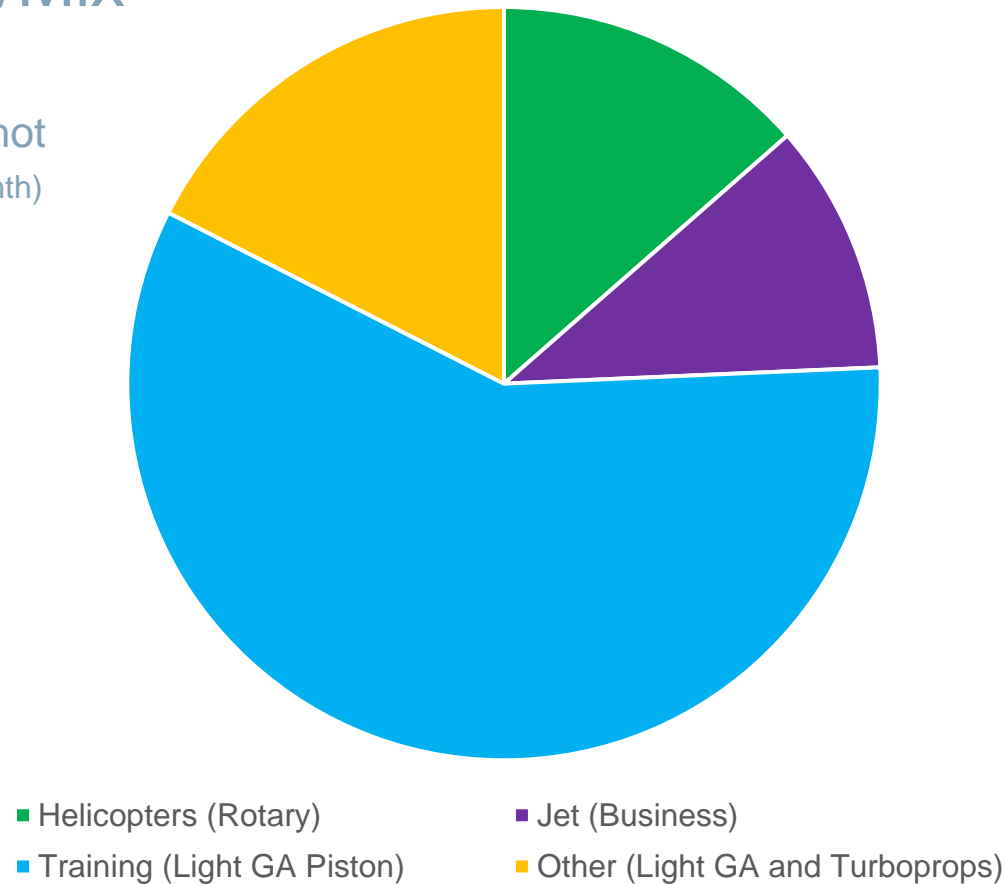
Annual Movements – Past 25 Years



*Main OXF Pilot School was CSE Aviation / Oxford Aviation Training / Oxford Aviation Academy / CAE – now **Leading Edge Aviation** is the largest school

London Oxford Airport Traffic Type/Mix*

* **June 2023** Snapshot
(historically the peak month)



Note: **Business Aviation** movements have now *increased 39%* since 2019 (pre-pandemic)

'Business Aviation' is generally deemed to be aircraft over 6,000lbs with turbine engines, not piston

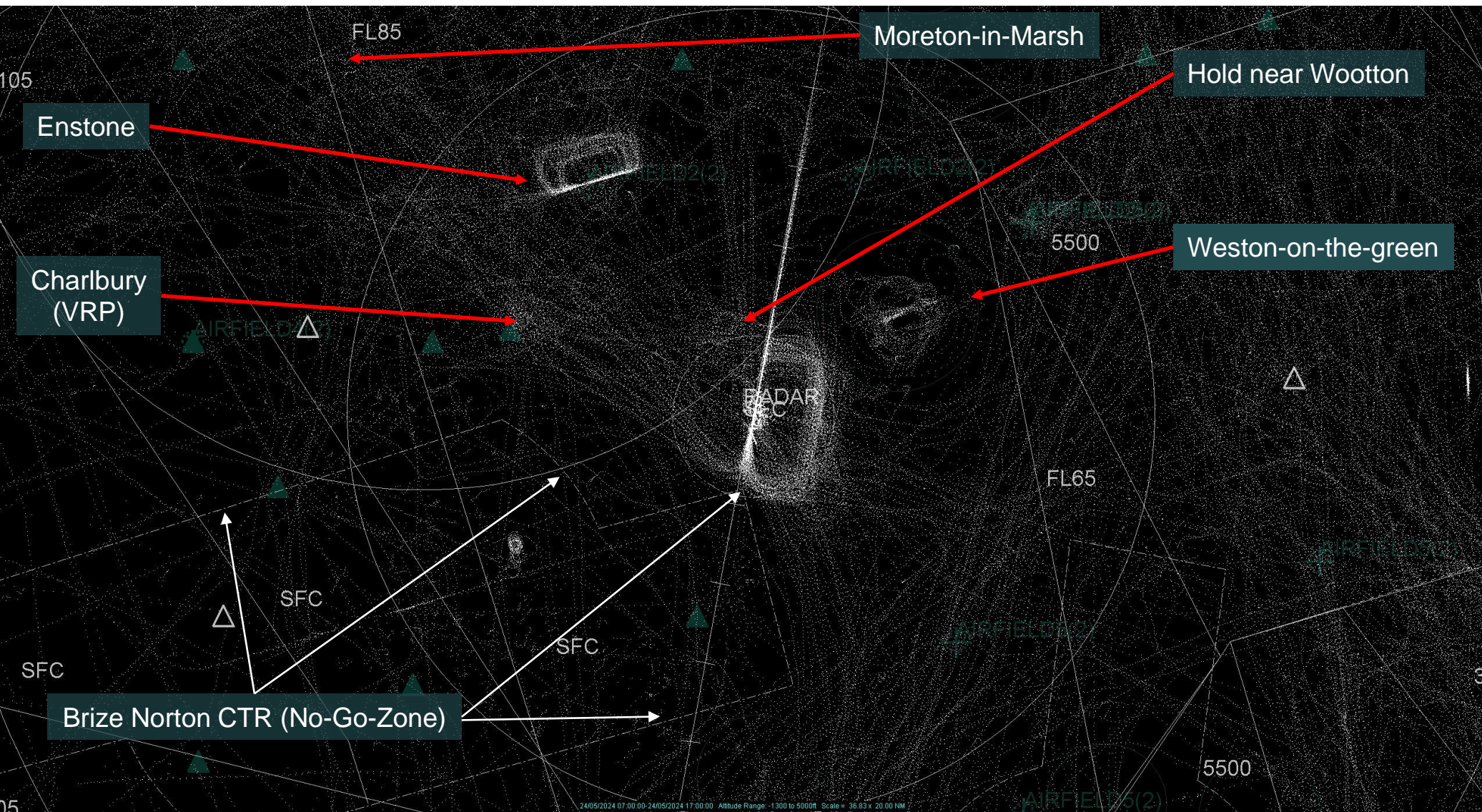
OXF Section 106 Limits & Breaches

'Night-time' is after midnight & before 06:00	S106 Ref.	Section 106 Annual Limit	JAN - MAY 2023	JAN – MAY 2024	
Night-time Emergency Services movements	1.2.1	No Limit	None	None	
Night-time Air Ambulance movements	1.2.2	500/annum	None	None	
Night-time Any Emergency Movements	1.2.3	No Limit	None	None	
Night-time Diversion Movements	1.2.4	No Limit	None	None	
Total Movements	3	160,000/annum	24,040	26,110	
Chapter 2 Jets (ICAO Annex 16)	4.1	500/annum	None	None	
50+ Tonne Jets	4.2	2000/annum	None	12	
Other monitoring - not reportable under Section 106 Agreement					
Night Embargo Breaks - midnight to 06:00		None (YTD)			

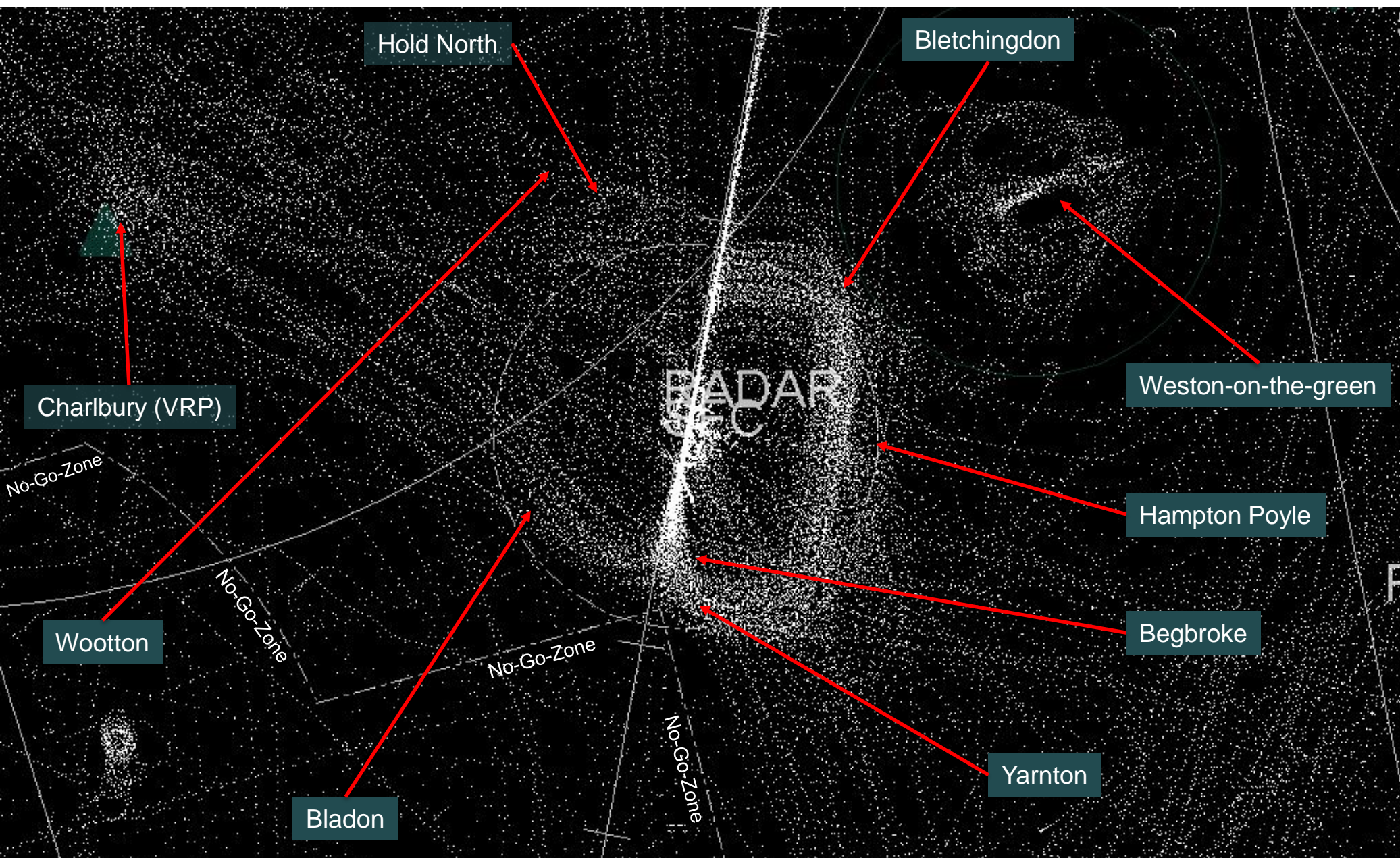
Actual Aircraft Paths

Radar Tracks 'Heat Map'
for typical busy day

Radar Tracking 'Heat Map' to 10 miles – Airport's busiest day (400+movements) since 2021

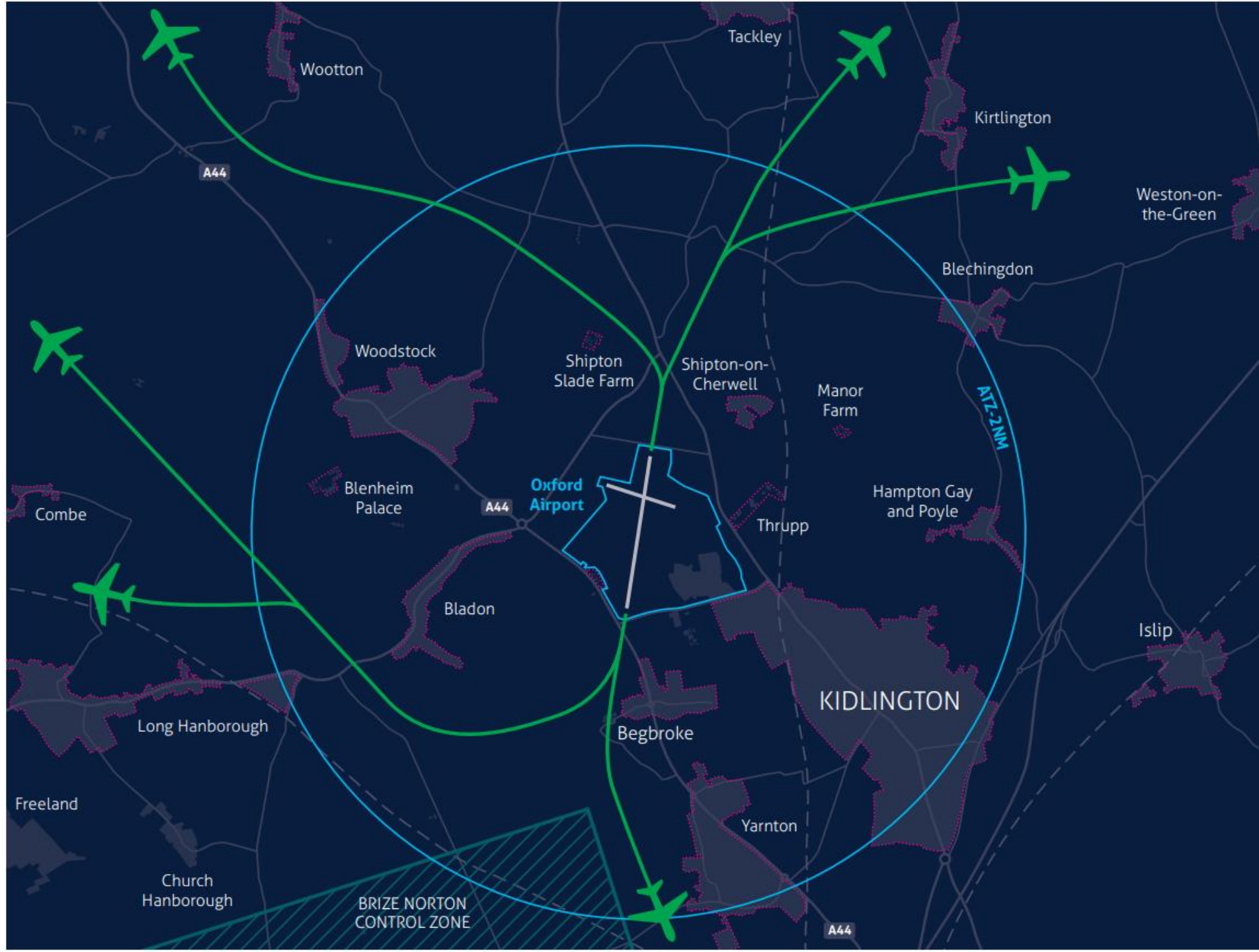


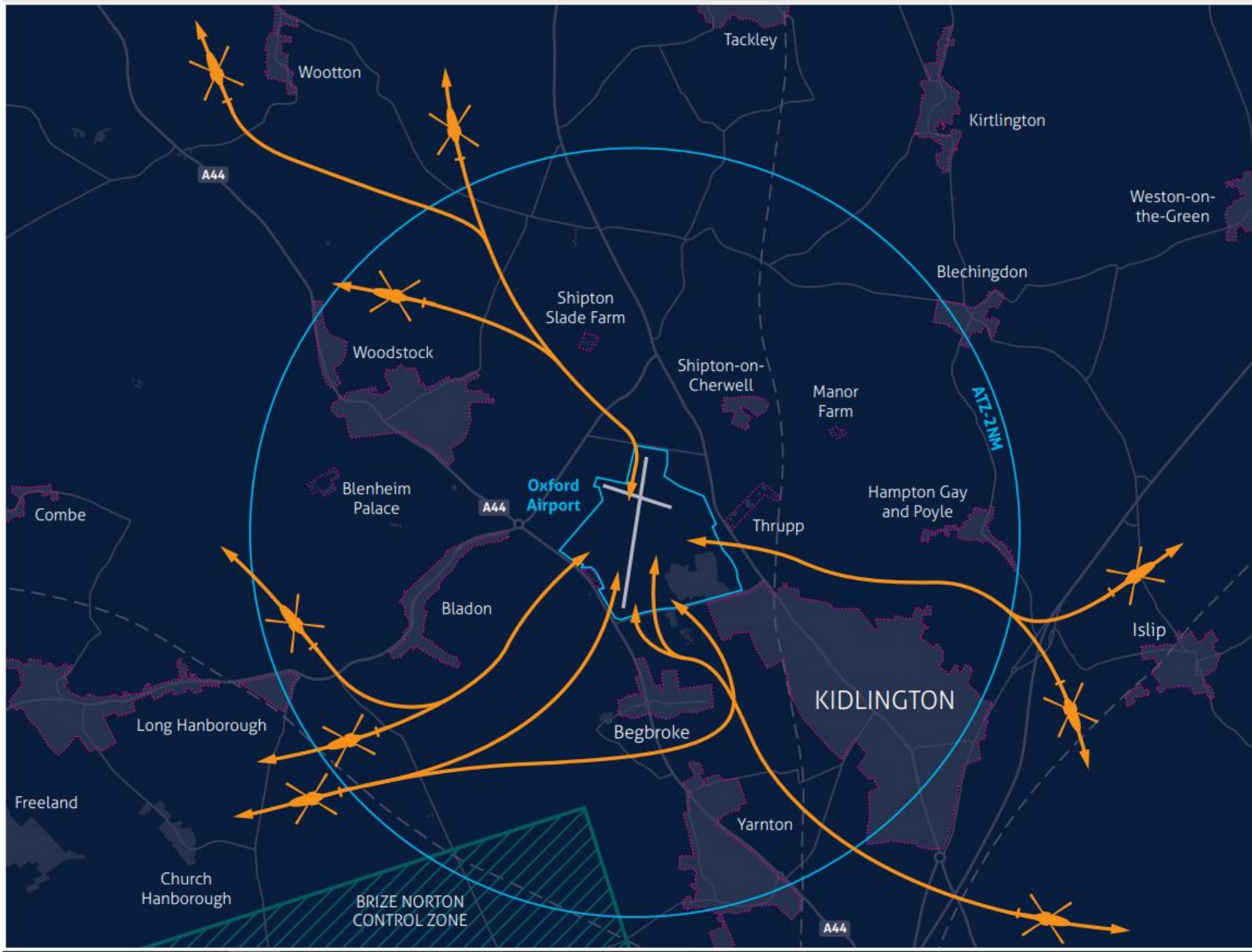
Radar Tracking 'Heat Map' to 4 miles – Airport's busiest day (400+movements) since 2021



Highest Volumes of Traffic Always Seen

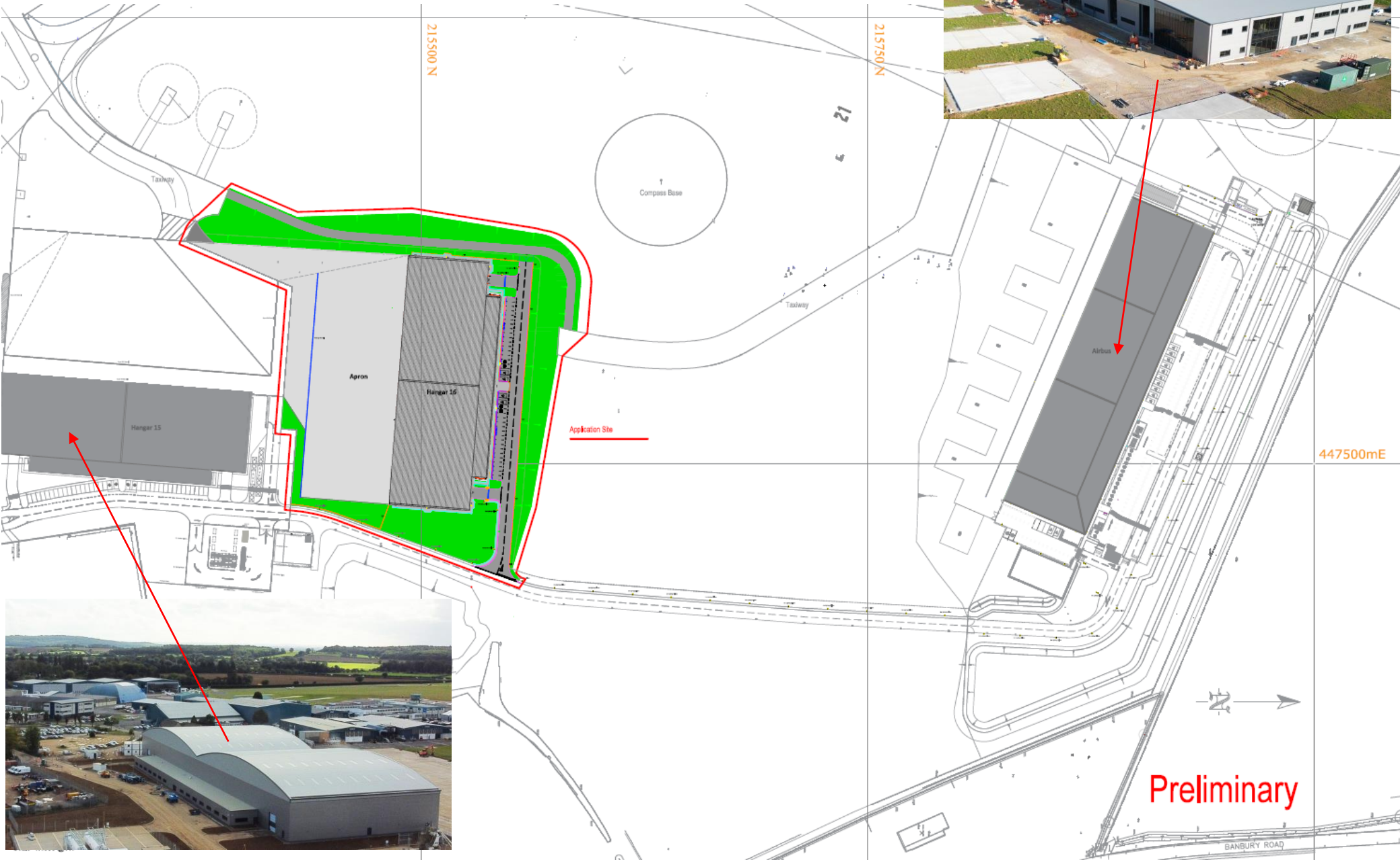
Recommended Noise Abatement Flight Tracks

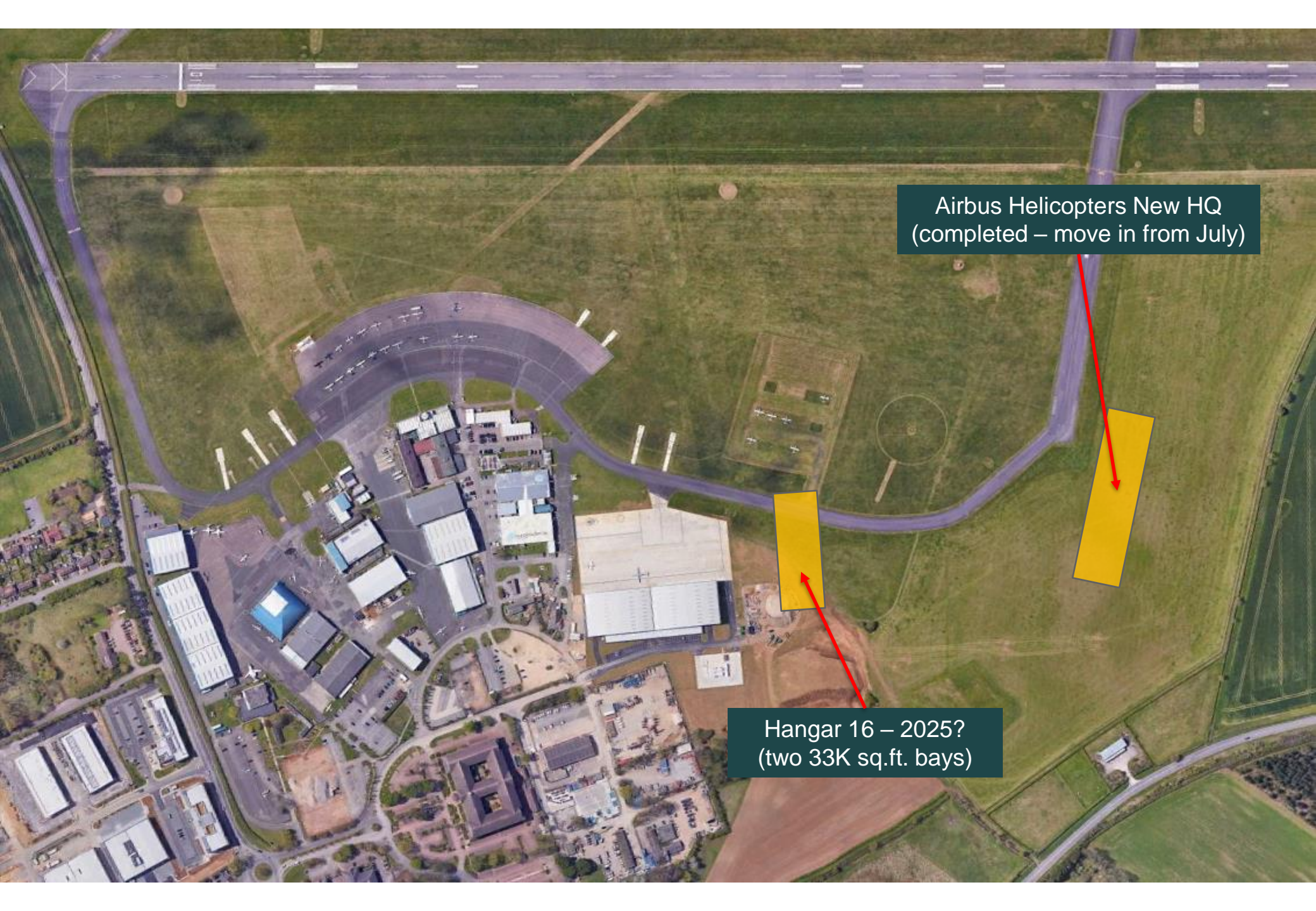




Hangar No.16 Proposal

Hangar 16 Proposed Site & Positioning





Airbus Helicopters New HQ
(completed – move in from July)

Hangar 16 – 2025?
(two 33K sq.ft. bays)

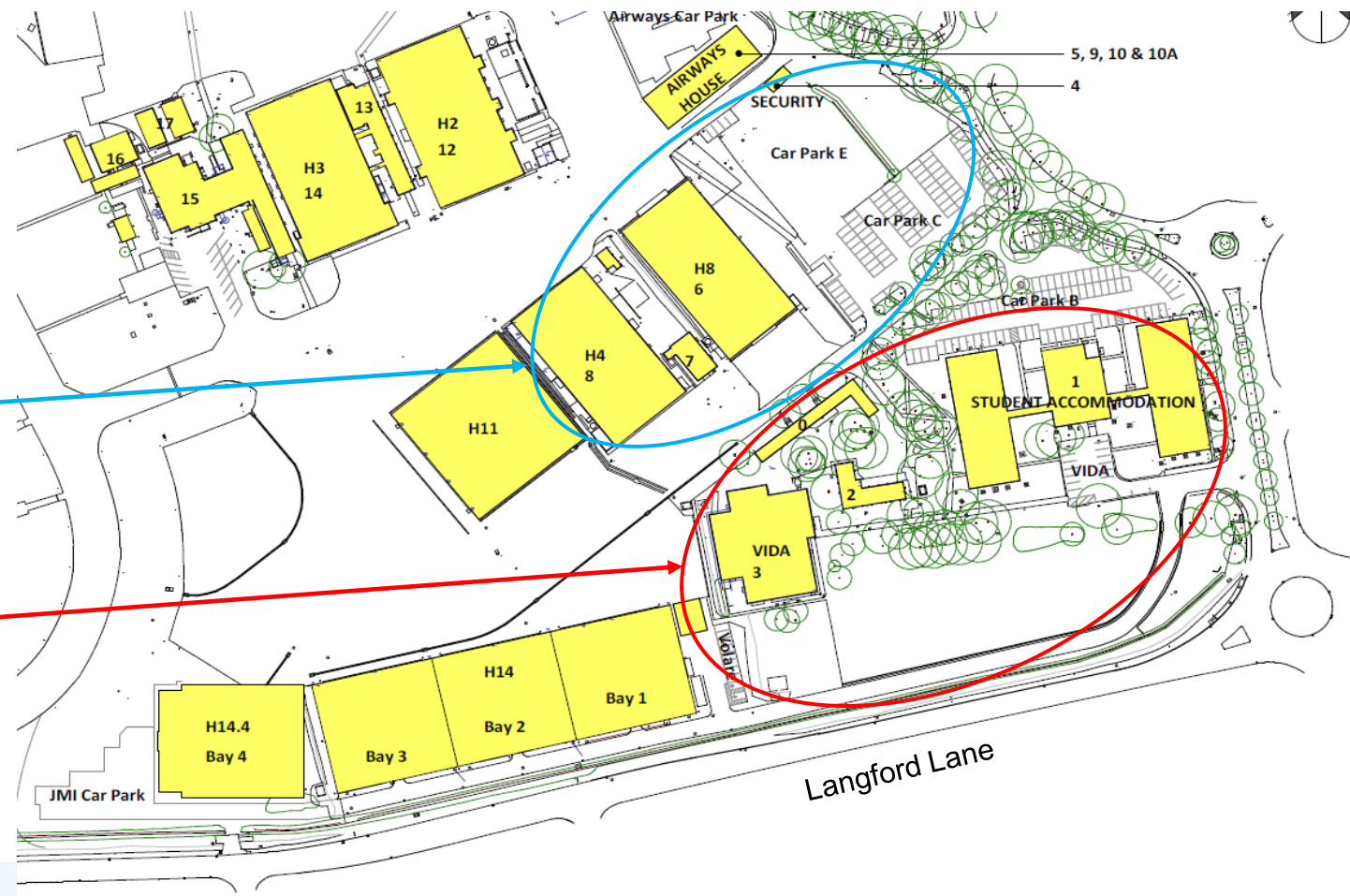
R & D Science Park
@ Airport Entrance Zone
(project commences July 2024)

Airport Business Park Proposal

(Existing Layout)

Phase 2

Phase 1







INDICATIVE CGI VISUALISATION OF CENTRAL COURTYARD AND CAFÉ



INDICATIVE OVERHEAD CGI VISUALISATION

London-Oxford Airport... a year in the life!